

Sensing Specifications

Flush Mountable	Shielded sensors only
Nominal Sensing Distance (Sn)	10mm
Repeat Error (% of Sn)	<2%
Hysteresis (% of SN)	2-20% (5% is typical)



Mechanical Specifications

Dimensions	M30x1.5 (see drawings)
DC Cable Versions	2 meter length, 3 wire, #22 AWG, .25"OD, PVC, UL2464
AC Cable Versions	2 meter length, 2 wire, #22 AWG, .25"OD, PVC, UL2464
DC connector Versions	M12 4-pin MICRO
AC connector Versions	1/2-20UNF 3-pin MICRO
Enclosure Rating	IP67, NEMA 1,3,4,6,13
Operating Temperature Range	-25° to 70°C (-13 to 158°F)
Signal Indicator	Yellow LED
Power-on Indicator	Green LED
Sensitivity Adjustment	Potentiometer
Sensor Face Material	Plastic (Valox DR-48)
Barrel Material - Shielded Versions	Ni-Plated Brass
Barrel Material - Unshielded	Plastic (Valox DR-48)
Shock	30g, 11ms



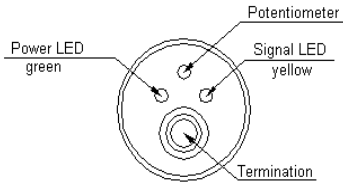
Electrical Specifications

	<u>DC Versions</u>	<u>AC Versions</u>
Supply Voltage Range	5-48 VDC	24-240 VAC
Continuous Switching Current	300 mA	300 mA
Voltage Drop	<2V DC	<7.5 VAC
Current Consumption	<10 mA	n/a
Maximum Switching Frequency	100 Hz	25 Hz
Leakage Current	n/a	<1.5 mA
Transient Protection	Yes	2kV, 1ms, 1kOhm
Short Circuit Protection	Yes	n/a
Reverse Polarity Protection	Yes	n/a

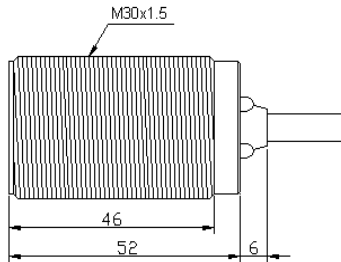
Part Numbers

Supply Voltage	Shielded	Sensing Range	PNP (sourcing)	NPN (Sinking)	AC	Normally Open	Normally Closed	Wiring Diagram	Termination	Part Number
5-48VDC	Y	2-10mm	Y			Y		1	Cable	C1A30AP1-M
5-48VDC	Y	2-10mm	Y			Y		7	MICRO	C1A30AP2-M
5-48VDC	Y	2-10mm	Y				Y	2	Cable	C1A30BP1-M
5-48VDC	Y	2-10mm	Y				Y	7	MICRO	C1A30BP2-M
5-48VDC	Y	2-10mm		Y		Y		3	Cable	C1A30AN1-M
5-48VDC	Y	2-10mm		Y		Y		8	MICRO	C1A30AN2-M
5-48VDC	Y	2-10mm		Y			Y	4	Cable	C1A30BN1-M
5-48VDC	Y	2-10mm		Y			Y	8	MICRO	C1A30BN2-M
5-48VDC		5-20mm	Y			Y		1	Cable	C2A30AP1-P
5-48VDC		5-20mm	Y			Y		7	MICRO	C2A30AP2-P
5-48VDC		5-20mm	Y				Y	2	Cable	C2A30BP1-P
5-48VDC		5-20mm	Y				Y	7	MICRO	C2A30BP2-P
5-48VDC		5-20mm		Y		Y		3	Cable	C2A30AN1-P
5-48VDC		5-20mm		Y		Y		8	MICRO	C2A30AN2-P
5-48VDC		5-20mm		Y			Y	4	Cable	C2A30BN1-P
5-48VDC		5-20mm		Y			Y	8	MICRO	C2A30BN2-P
24-240VAC	Y	2-10mm			Y	Y		5	Cable	C1A30AF1-M
24-240VAC	Y	2-10mm			Y	Y		9	AC-MICRO	C1A30AF2-M
24-240VAC	Y	2-10mm			Y		Y	6	Cable	C1A30BF1-M
24-240VAC	Y	2-10mm			Y		Y	9	AC-MICRO	C1A30BF2-M
24-240VAC		5-20mm			Y	Y		5	Cable	C1A30BF1-M
24-240VAC		5-20mm			Y	Y		9	AC-MICRO	C1A30BF2-M
24-240VAC		5-20mm			Y		Y	6	Cable	C1A30BF1-M
24-240VAC		5-20mm			Y		Y	9	AC-MICRO	C1A30BF2-M

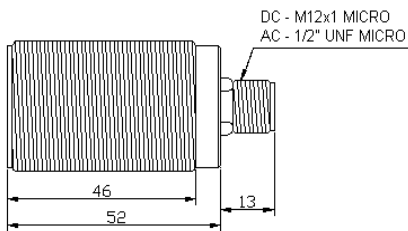
30mm Plastic Cap Prox Dimensions



End View

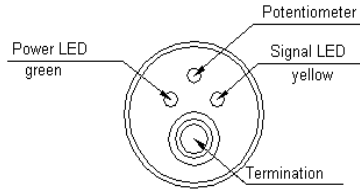


Side View - Cable Versions

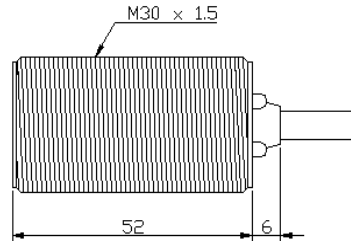


Side View - DC and AC MICRO Connector

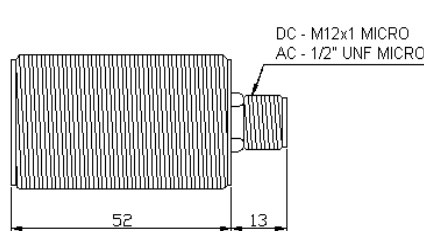
30mm Metal Cap Prox Dimensions



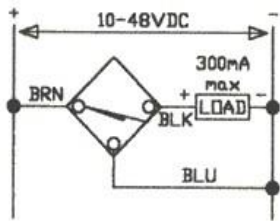
End View



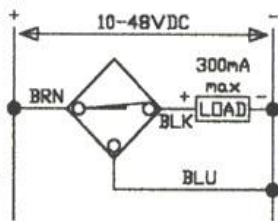
Side View - Cable Versions



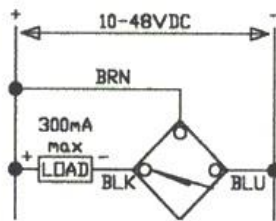
Side View - DC and AC MICRO Connector



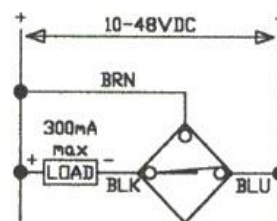
Cable - PNP/N.O.
Wiring Diagram #1



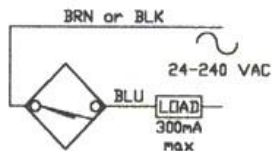
Cable - PNP/N.C.
Wiring Diagram #2



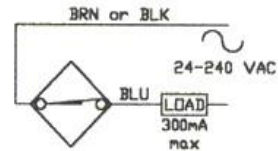
Cable - NPN/N.O.
Wiring Diagram #3



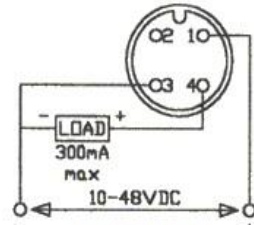
Cable - NPN/N.C.
Wiring Diagram #4



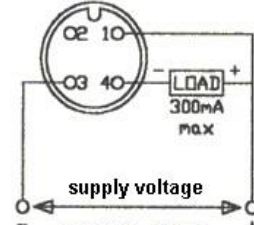
Cable - AC/N.O.
Wiring Diagram #5



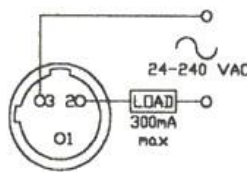
Cable - AC/N.C.
Wiring Diagram #6



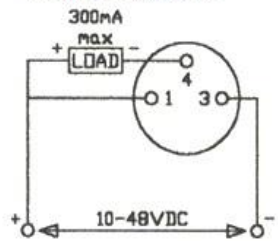
MICRO - PNP
Wiring Diagram #7



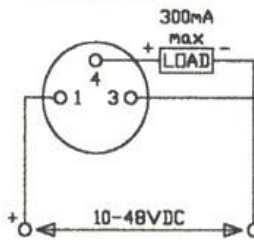
MICRO - NPN
Wiring Diagram #8



1/2"-20 UNF AC-MICRO
Wiring Diagram #9



PICO - NPN
Wiring Diagram #10



PICO - PNP
Wiring Diagram #11