



Sensing Specifications

Nominal Sensing Distance (Sn)	Water Detection - Direct Contact
Repeat Error (% of Sn)	<2%
Hysteresis (% of SN)	2-20% (5% is typical)

Mechanical Specifications

Dimensions	M18x1 (see drawings)
DC Cable Versions	2 meter length, 3 wire, #22 AWG, .25"OD, PVC, UL2464
AC Cable Versions	2 meter length, 2 wire, #22 AWG, .25"OD, PVC, UL2464
Enclosure Rating	IP67, NEMA 1,3,4,6,13
Operating Temperature Range	-25° to 70°C (-13 to 158°F)
Signal Indicator	Yellow LED
Power-on Indicator	Green LED
Sensor Face Material	Plastic (Valox DR-48)
Barrel Material - Unshielded	Plastic
Shock	30g, 11ms

Electrical Specifications

	<u>DC Versions</u>	<u>AC Versions</u>
Supply Voltage Range	5-48 VDC	24-240 VAC
Continuous Switching Current	300 mA	300 mA
Voltage Drop	<2V DC	<7.5 VAC
Current Consumption	<10 mA	n/a
Maximum Switching Frequency	100 Hz	25 Hz
Leakage Current	n/a	<1.5 mA
Transient Protection	Yes	2kV, 1ms, 1kOhm
Short Circuit Protection	Yes	n/a
Reverse Polarity Protection	Yes	n/a



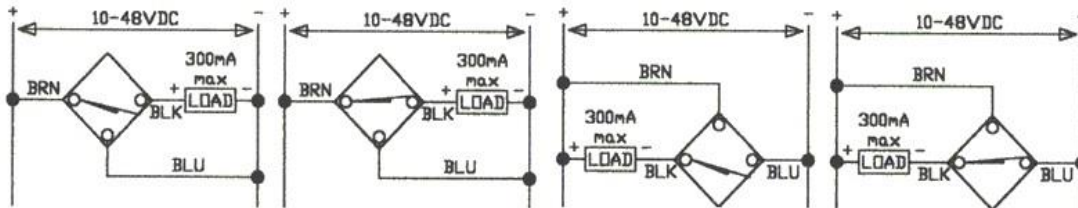
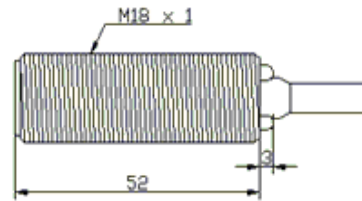
Part Numbers

Supply Voltage	Sensing Range	PNP (sourcing)	NPN (Sinking)	AC	Normally Open	Normally Closed	Termination	Part Number
5-48VDC	Direct contact	Y			Y		Cable	C2A18AP1-P/WD
5-48VDC	Direct contact	Y				Y	Cable	C2A18BP1-P/WD
5-48VDC	Direct contact		Y		Y		Cable	C2A18AN1-P/WD
5-48VDC	Direct contact		Y			Y	Cable	C2A18BN1-P/WD
24-240VAC	Direct contact			Y	Y		Cable	C2A18AF1-P/WD
24-240VAC	Direct contact			Y		Y	Cable	C2A18BF1-P/WD

Application Notes:

When ordering a custom cable length (standard is 2 meters) please contact us. Avoid mounting the sensor vertically. Water or debris may gather on the sensing face.

18mm Plastic Cap Prox Dimensions
(Submersible Sensors)

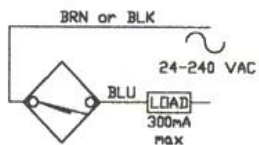


Cable - PNP/N.O.
Wiring Diagram #1

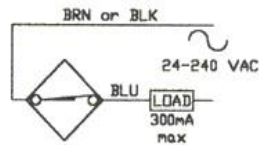
Cable - PNP/N.C.
Wiring Diagram #2

Cable - NPN/N.O.
Wiring Diagram #3

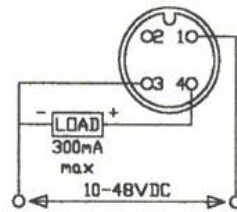
Cable - NPN/N.C.
Wiring Diagram #4



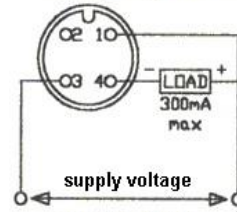
Cable - AC/N.O.
Wiring Diagram #5



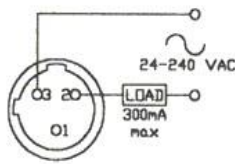
Cable - AC/N.C.
Wiring Diagram #6



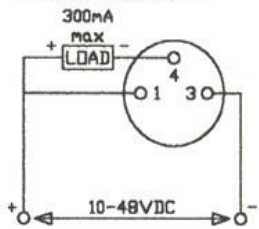
MICRO - PNP
Wiring Diagram #7



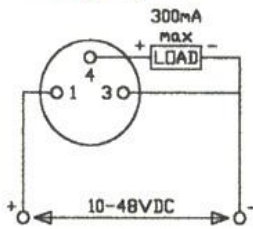
MICRO - NPN
Wiring Diagram #8



1/2"-20 UNF AC-MICRO
Wiring Diagram #9



PICO - NPN
Wiring Diagram #10



PICO - PNP
Wiring Diagram #11