

### Sensing Specifications

Flush Mountable	Shielded sensors only
Nominal Sensing Distance (Sn)	5mm
Repeat Error (% of Sn)	<2%
Hysteresis (% of SN)	2-20% (5% is typical)



### Mechanical Specifications

Dimensions	M18x1 (see drawings)
DC Cable Versions	2 meter length, 3 wire, #22 AWG, .25"OD, PVC, UL2464
AC Cable Versions	2 meter length, 2 wire, #22 AWG, .25"OD, PVC, UL2464
DC connector Versions	M8 3-pin PICO
Enclosure Rating	IP67, NEMA 1,3,4,6,13
Operating Temperature Range	-25° to 70°C (-13 to 158°F)
Signal Indicator	Yellow LED
Power-on Indicator	Green LED
Sensitivity Adjustment	Potentiometer
Sensor Face Material	Plastic (Valox DR-48)
Barrel Material - Shielded Versions	Ni-Plated Brass
Barrel Material - Unshielded	Plastic
Shock	30g, 11ms

### Electrical Specifications

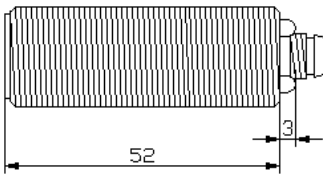
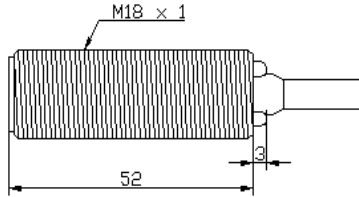
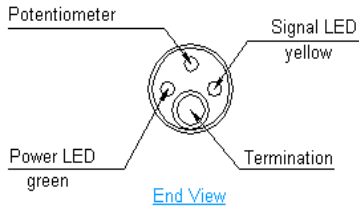
	<u>DC Versions</u>	<u>AC Versions</u>
Supply Voltage Range	5-48 VDC	24-240 VAC
Continuous Switching Current	300 mA	300 mA
Voltage Drop	<2V DC	<7.5 VAC
Current Consumption	<10 mA	n/a
Maximum Switching Frequency	100 Hz	25 Hz
Leakage Current	n/a	<1.5 mA
Transient Protection	Yes	2kV, 1ms, 1kOhm
Short Circuit Protection	Yes	n/a
Reverse Polarity Protection	Yes	n/a



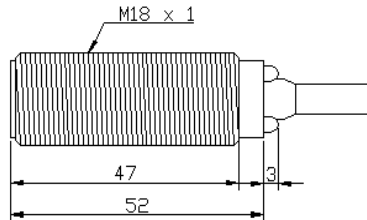
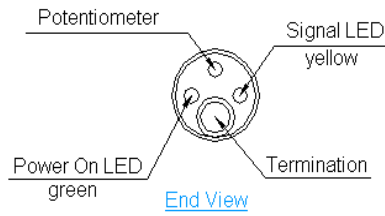
### Part Numbers

Supply Voltage	Shielded	Sensing Range	PNP (sourcing)	NPN (Sinking)	AC	Normally Open	Normally Closed	Termination	Part Number
5-48VDC	Y	1-5mm	Y			Y		Cable	C1A18AP1-M
5-48VDC	Y	1-5mm	Y			Y		PICO	C1A18AP2-M
5-48VDC	Y	1-5mm	Y				Y	Cable	C1A18BP1-M
5-48VDC	Y	1-5mm	Y				Y	PICO	C1A18BP2-M
5-48VDC	Y	1-5mm		Y		Y		Cable	C1A18AN1-M
5-48VDC	Y	1-5mm		Y		Y		PICO	C1A18AN2-M
5-48VDC	Y	1-5mm		Y			Y	Cable	C1A18BN1-M
5-48VDC	Y	1-5mm		Y			Y	PICO	C1A18BN2-M
5-48VDC		2-8mm	Y			Y		Cable	C2A18AP1-P
5-48VDC		2-8mm	Y			Y		PICO	C2A18AP2-P
5-48VDC		2-8mm	Y				Y	Cable	C2A18BP1-P
5-48VDC		2-8mm	Y				Y	PICO	C2A18BP2-P
5-48VDC		2-8mm		Y		Y		Cable	C2A18AN1-P
5-48VDC		2-8mm		Y		Y		PICO	C2A18AN2-P
5-48VDC		2-8mm		Y			Y	Cable	C2A18BN1-P
5-48VDC		2-8mm		Y			Y	PICO	C2A18BN2-P
24-240VAC	Y	1-5mm			Y	Y		Cable	C1A18AF1-M
24-240VAC	Y	1-5mm			Y		Y	Cable	C1A18BF1-M
24-240VAC		2-8mm			Y	Y		Cable	C2A18AF1-P
24-240VAC		2-8mm			Y		Y	Cable	C2A18BF1-P

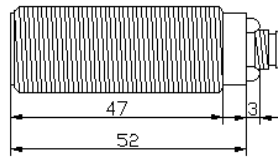
### 18mm Plastic Cap Prox Dimensions



### 18mm Metal Cap Prox Dimensions



Side View - Cable Versions



Side View - PICO Connector Versions

